

## Chironomidae (Insecta, Diptera) from Hungary 2. New records of *Lipiniella moderata* Kalugina, 1970

Kalman Biró

Biró, K. (2000): Chironomidae (Insecta, Diptera) from Hungary 2. New records of *Lipiniella moderata* Kalugina, 1970. – In Baehr, M. & M. Spies (eds): Contributions to chironomid research in memory of Dr. Friedrich Reiss. – Spixiana 23/2: 157-158.

Larvae of *Lipiniella moderata* Kalugina have been collected for the first time in Hungary and Yugoslavia. A summary is given of the western European distribution of the genus.

Kalman Biró, Zehntenstrasse 10, CH-4133 Pratteln, Switzerland.

The genus *Lipiniella* Shilova, 1961 is reportedly distributed across the Palaearctic region and in Canada, the larvae occur on sandy sediments in the litoral of lakes, in lentic habitats and the potamal of rivers, and in estuaries (Pinder & Reiss 1983, Becker 1995).

Two of the four described species have been recorded in Europe: *L. arenicola* Shilova, 1961 from Norway (Schnell & Aagaard 1996), The Netherlands (e.g. Smit et al. 1993), France (Laville & Serratosio 1996), and Germany (Becker 1995); and *L. moderata* Kalugina, 1970 from Norway (Schnell & Aagaard 1996) and The Netherlands (Klink et al. 1995).

**Material** (slide mounted in Euparal; leg. + in coll. K. Biró). 1 larva, Hungary, Szigetköz, Old-Danube river near Dunaremete, in sandy mud, 2.XI.1998; 1 larva, Yugoslavia, Pancevo, canal at oil refinery, in mud, 25.VIII.1999.

These are the first records of *L. moderata* from Hungary and the Carpathian basin, and the southernmost of any *Lipiniella* from Europe.

The species determinations are based on a combination of larval features so far described in the genus only from *L. moderata* Kalugina: an extensive frontoclypeus depression with granular surface; a premandible with 5 teeth plus another, more proximal knob (Fig. 1); and abdominal segment VIII with postero-ventral tubules about as long as the anal tubules (see Kiknadze et al. 1989, Kiknadze et al. 1991, Shilova et al. 1993, Shilova & Proviz 1997).

### Acknowledgement

I am grateful to VITUKI (Budapest) for supporting my work.

### References

- Becker, C. 1995. Ein Beitrag zur Zuckmückenfauna des Rheins (Diptera: Chironomidae). – Doctoral Diss. Univ. Bonn (Germany), Verlag Shaker, Aachen, v+265 pp.
- Kiknadze, I. I., I. E. Kerkis, A. I. Shilova & M. A. Filippova 1989. A review of the species of the genus *Lipiniella* Shilova (Diptera), *L. arenicola* [sic!] Shil. and *L. moderata* Kalug. – Acta Biol. Debr. Oecol. Hung. 2: 115-128
- – , A. I. Shilova, I. E. Kerkis, N. D. Shobanov, N. I. Zelentsov, L. P. Grebenyuk, A. G. Istomina & V. A. Prasolov 1991. Kariotipy i morfologija lichinok triby Chironomini. Atlas. – Nauka, Sib. Otdel., Novosibirsk, 115 pp. (in Russian)

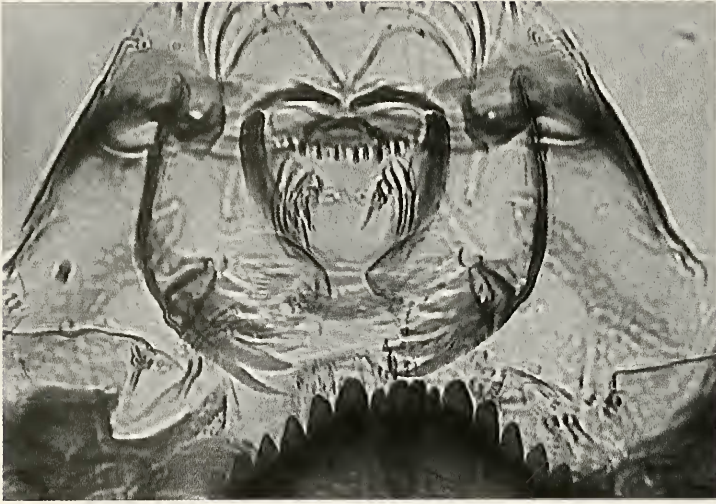


Fig. 1. *Lipiniella moderata*; larva: epipharynx and mentum.

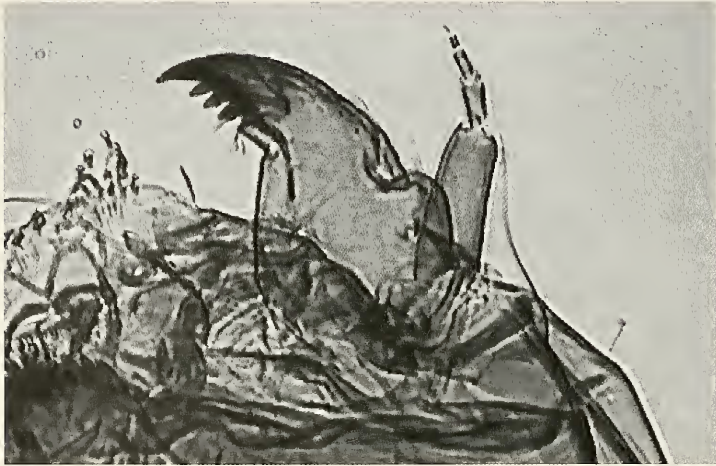


Fig. 2. *Lipiniella moderata*; larva: mandible and antenna.

- Klink, A., J. Mulder, M. Wilhelm & M. Jansen 1995. Ecologische ontwikkelingen in de wateren van de Blauwe Kamer 1989-1995. Doorzicht afgenomen en inzicht toegenomen. – Rapp. en Meded. Hydrobiol. Adviesburo Klink 58: 79 pp. + bijl.
- Laville, H. & B. Serra-Tosio 1996. Additions et corrections à l'inventaire des Chironomidés (Diptera) de France depuis 1990. – Ann Limnol. 32: 115-121
- Pinder, L. C. V. & F. Reiss 1983. 10. The larvae of Chironominae (Diptera: Chironomidae) of the Holarctic region – Keys and diagnoses. – Ent. scand. Suppl. 19: 293-435
- Schnell, Ø. A. & K. Aagaard 1996. Chironomidae – Fjærmygg. Pp. 210-248 in Aagaard, K. & D. Dolmen (eds): Limnofauna norvegica. Katalog over norsk ferskvannsauna. – Tapir Forlag, Trondheim (Norway), 310 pp.
- Shilova, A. I., I. E. Kerkis & I. I. Kiknadze (1992) 1993. *Lipiniella prima* sp. nov. (Diptera, Chironomidae), larva and karyotype. – Nethlds J. Aquat. Ecol. 26: 197-201
- & V. I. Proviz 1997. Novyi vid roda *Lipiniella* (Diptera, Chironomidae) iz Vostochnoi Sibiri. – Zool. Zh. 76: 1160-1167 (in Russian)
- Smit, H., F. Heinis, R. Bijkerk & F. Kerkum (1992) 1993. *Lipiniella arenicola* [sic!] (Chironomidae) compared with *Chironomus muratensis* and *Ch. nudiventris*: distribution patterns related to depth and sediment characteristics, diet, and behavioural response to reduced oxygen concentrations. – Nethlds J. Aquat. Ecol. 26: 431-440